



SWEET EVENTS AND PLANNING™

"Every Event Deserves to be Sweet"

CONTACT:

Nicole D. Hayes
Media Relations
Nicole@pieces-of-life.com
(202) 527-4106

FOR IMMEDIATE RELEASE

Sweet Events and Planning Names HU Business Senior as Summer Intern

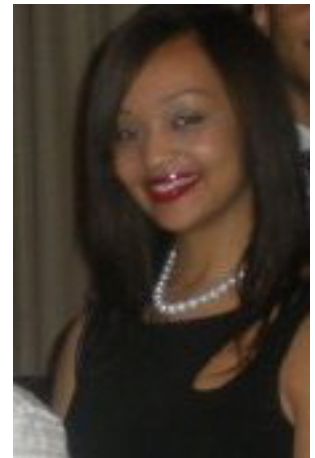
Jessica Butler brings leadership, including Miss Black America DC Metropolitan Pageant Finalist

(Chevy Chase, Md. – June 15, 2011) Felicia Evans Long, founder and owner of Sweet Events and Planning, LLC based in Chevy Chase, Md., today announces Jessica Butler, a Howard University senior majoring in Business Management, as the company's new summer 2011 intern. Ms. Butler will assist with the company's administrative functions and replenishing the frequently displayed Sweet Events and Planning Signature Candy Parlor™ at A Grand Event Party Rental located in Bethesda, Md. Butler, who has strong interests in event planning, will also help manage events for corporations, nonprofits to weddings and receptions.

Butler is the first intern for Sweet Events and Planning. Small businesses like Sweet Events and Planning can benefit greatly from the help of volunteer interns, particularly in today's challenging economic climate.

"We are delighted Jessica has chosen to join Sweet Events and Planning," said Felicia Evans Long. "Her enthusiasm for event planning coupled with her business skills will be a tremendous asset to the business, our clients and her professional development."

Butler's leadership skills have placed her in numerous community roles. She is currently the Vice President of Human Resources at the Howard University Consulting Club. She was recently President and CEO of Helping Hands, a student fundraising group for Washington, D.C.-area seniors also assisting with the Haitian Relief Fund. She was also a Top 10 finalist in the Miss Black America DC Metropolitan Pageant in November 2009.



Jessica Butler, new intern for Maryland-based Sweet Events and Planning, LLC and Howard University Business Management senior.



[Sweet Events and Planning](#) was started by Evans Long and her husband Tim Long in late 2008. For more than 12 years, Evans Long has managed everything from corporate events, birthday parties, graduation parties, weddings, receptions, baby showers and more. Known for managing her clients' budgets like her own, she excels at "making a dollar out of 15 cents," while delivering fabulous, memorable events. Her North Carolina roots inspired her to create the company's Sweet Event and Planning Signature Candy Parlor™, a customer favorite. Evans Long believes that "every journey in life deserves something sweet."

Persons seeking help for an upcoming event can find Sweet Events and Planning at www.sweeteventsandplanning.com, at A Grand Event Party Rentals, 5020 Nicholson Court, North Bethesda, Maryland 20895, or by calling (973) 493-3579. The company is also listed as a vendor on Martha Stewart's partner site WeddingWire.com .

###

